

CONFIDENTIAL

T-10

COPY NUMBER 14 OF 130 COPIES
COMMANDER RIVER ASSAULT SQUADRON NINE
COMMANDER TASK GROUP 117.1
FLEET POST OFFICE
SAN FRANCISCO, CA 96601
20 APRIL 1968

CTG 117.1
WATER MOVEMENT PLAN 36-68

TIME ZONE: HOTEL

REF: MAP, VIETNAM, 1:50,000, SHEETS 6229I, 6229IV, 6129I

TASK ORGANIZATION:

TG 117.1	RIVERINE ASSAULT GROUP ALFA	COMRIVRON NINE CDR L.H. HAMEL, USN (015851-20)
TU 117.1.1	RIVERINE ASSAULT UNIT ALFA ONE	COMRIVDIV 91 LT R.E. HANSON, USN (031798-60)

1. MISSION: TU 117.1.1 SUPPORTS 4/47 AS RRF ON ONE HOUR STANDBY AFTER ARRIVAL OF MRB AT VINH LONG.

2. EXECUTION:

(a) MRB will move to VINH LONG commencing 210630H.

(b) The following will take place if ordered.

<u>CODE</u>	<u>EVENT</u>
-----	T-91-4,5,6 load C/4/47 at COLLETON.
-----	T-91-7,9,10 load A/4/47 at LST.
-----	T-91-11,13,3 load B/4/47 at COLLETON.
NEW MEXICO	ETD MRB.
ARIZONA	Land 4/47 Inf at Beaches to be announced.
UTAH	Pick up 4/47 at Beaches to be announced and return to MRB.

3. CODE WORDS

<u>CODE</u>	<u>EVENT</u>
CAROLINA	Backload designated units.
KANSAS	Insert Designated units.
WASHINGTON	Block at designated places.
DAKOTA	Return to MRB.

4. COORDINATING INSTRUCTIONS.

(a) Detainees 14-50 will be evacuated to FSPB CAMERON as directed.

L. H. HAMEL
CDR, U.S. NAVY
COMMANDER TASK GROUP 117.1

AUTHENTICATED:

J.H. Detweiler

J.H. DETWEILER
LT, U.S. NAVY
N3

1. FREQUENCY PLAN (ARMY)

4/47	ORCHID BN CMD	P43.55
		A65.10
	BN LOG	62.40
	A Co	55.45
	B Co	49.05
	C Co	48.55
	D Co	56.25
	DC/Mort FD	47.65
	RECON PLT ROMEO	48.15
	RECON PLT JULIETT	56.10

2. VNN CHALLENGE CODE

<u>DATE</u>	<u>CHALLENGE</u>	<u>REPLY</u>
21	2	3
22	3	4
23	4	2
24	2	3

3. VOICE CALLS FOR TU 117.1.1: CALL SIGN: DRAGONFLY

for Monitors: DRAGONFLY MIKE (HULL NUMBER)

for ASPB's: DRAGONFLY ALFA (HULL NUMBER)

for ATC's: DRAGONFLY TANGO (HULL NUMBER)


for CCB: DRAGONFLY CHARLIE (HULL NUMBER)

NOTE: For TU 117.1.2 units CHOPPED to TU 117.1.1 use word "SAIR SNIPS" vice word "DRAGONFLY".

4. ALL OTHER COMMUNICATIONS IN ACCORDANCE WITH COI.

L. H. HAMEL
 CDR, U.S. NAVY
 COMMANDER TASK GROUP 117.1

AUTHENTICATED:


 J.H. DETWEILLER
 LT, U.S. NAVY
 N3

C-1

CONFIDENTIAL

1. WATER CK PTS

W 1 XS 090418
 W 2 XS 045387
 W 3 XS 263370
 W 4 XS 116398
 W 5 XS 218367
 W 6 XS 368407
 W 7 XS 167368
 W 8 XS 320400
 W 9 XS 064405
 W 10 XS 136415
 W 11 XS 023371
 W 12 XS 162406
 W 13 XS 195378
 W 14 XS 176395

2. TIDES

(CAI BE)
 21 APR 0609 3.5
 1444 9.9
 22 APR 0734 3.9
 1536 9.9
 2216 8.4
 23 APR 0131 8.5
 0901 4.2
 1603 10.2
 2239 7.1
 24 APR 0308 10.1
 1012 4.2
 1629 10.2
 2306 5.8

(VINH LONG)

21 APR 0649 3.6
 1437 9.8
 22 APR 0814 4.0
 1529 9.8
 2256 8.5
 23 APR 0124 8.4
 0941 4.3
 1556 10.1
 2319 7.2
 24 APR 0310 10.0
 1052 4.3
 1622 10.1
 2348 5.9

3. BEACH COORDS

GREEN BCH 1 XS116387
 GREEN BCH 2 XS114388
 GREEN BCH 3 XS113390
 RED BCH 1 XS069402
 RED BCH 2 XS068401
 RED BCH 3 XS067399
 RED BCH 4 XS065398

4. ROUTES AND ANCHORAGES

SONG TIEN GIANG (SOUTH) RT SPRUCE
 SONG TIEN GIANG (NORTH) RT ASH
 (W-4, W-14, W-5)
 DONG TAM ANCHORAGE MRB PALM
 VINH LONG ANCHORAGE MRB JUPITER

5. DISTANCES: From PALM to:

W-5 10.8 N.M.
 GREEN BCHS 16.8 N.M.
 W-1 18.7 N.M.
 RED BCHS 20.3 N.M.
 JUPITER 23.3 N.M.

6. SOLAR AND LUNAR DATA

DATE	SUNRISE	SUNSET	MOONRISE	MOONSET	PHASE
21 APR	0639	1905	0222	1410	last qtr
22	0639	1905	0305	1508	
23	0638	1905	0342	1551	
24	0638	1906	0423	1637	

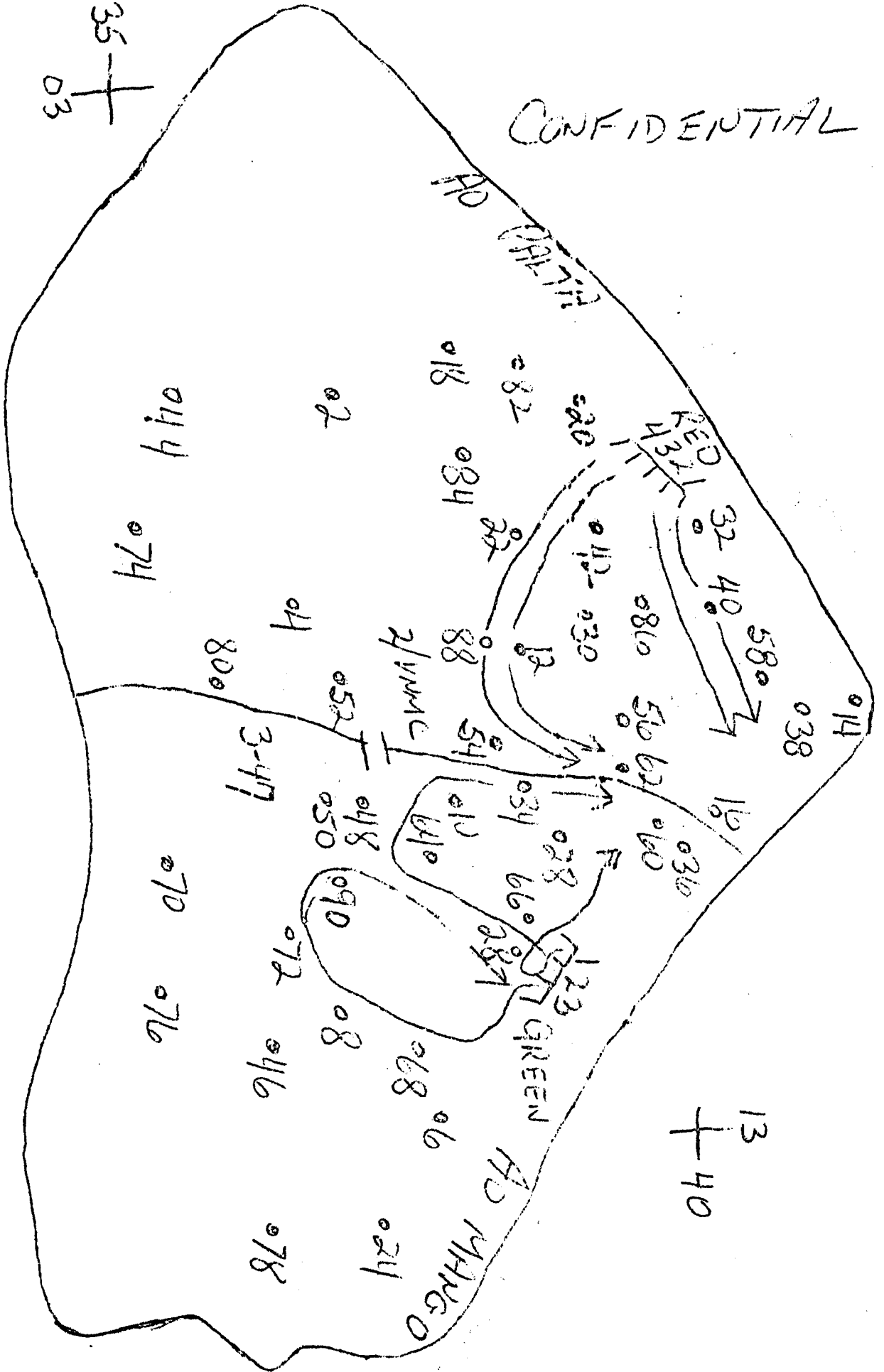
L. H. HAMEL
 CDR, U.S. NAVY
 COMMANDER TASK GROUP 117.1

AUTHENTICATED:

J.H. Detweiler
 J.H. DETWEILER
 LT, U.S. NAVY

N3

CONFIDENTIAL



CONFIDENTIAL